

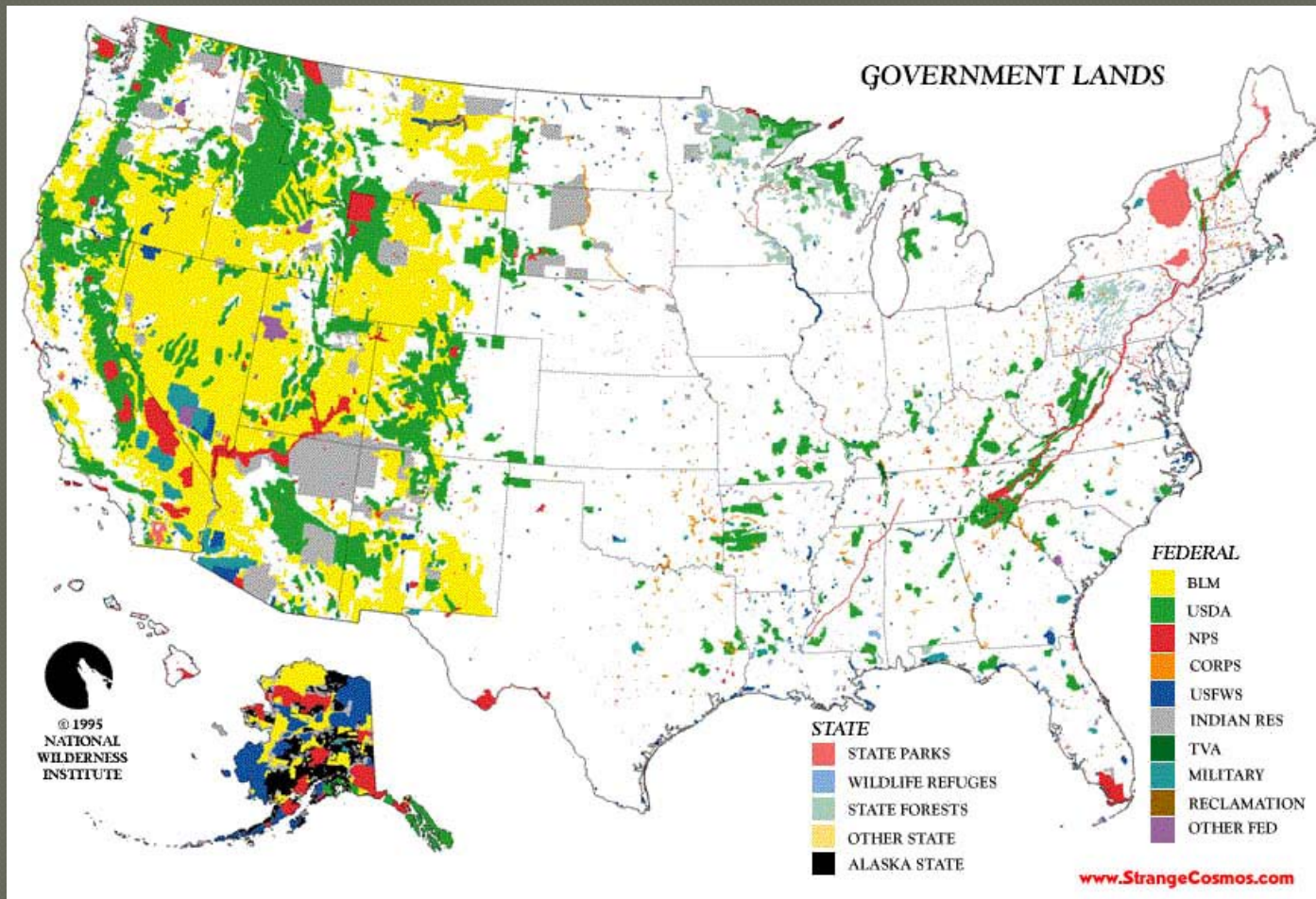
# Financing Remediation on Public Land

Bureau of Land Management  
William Haigh

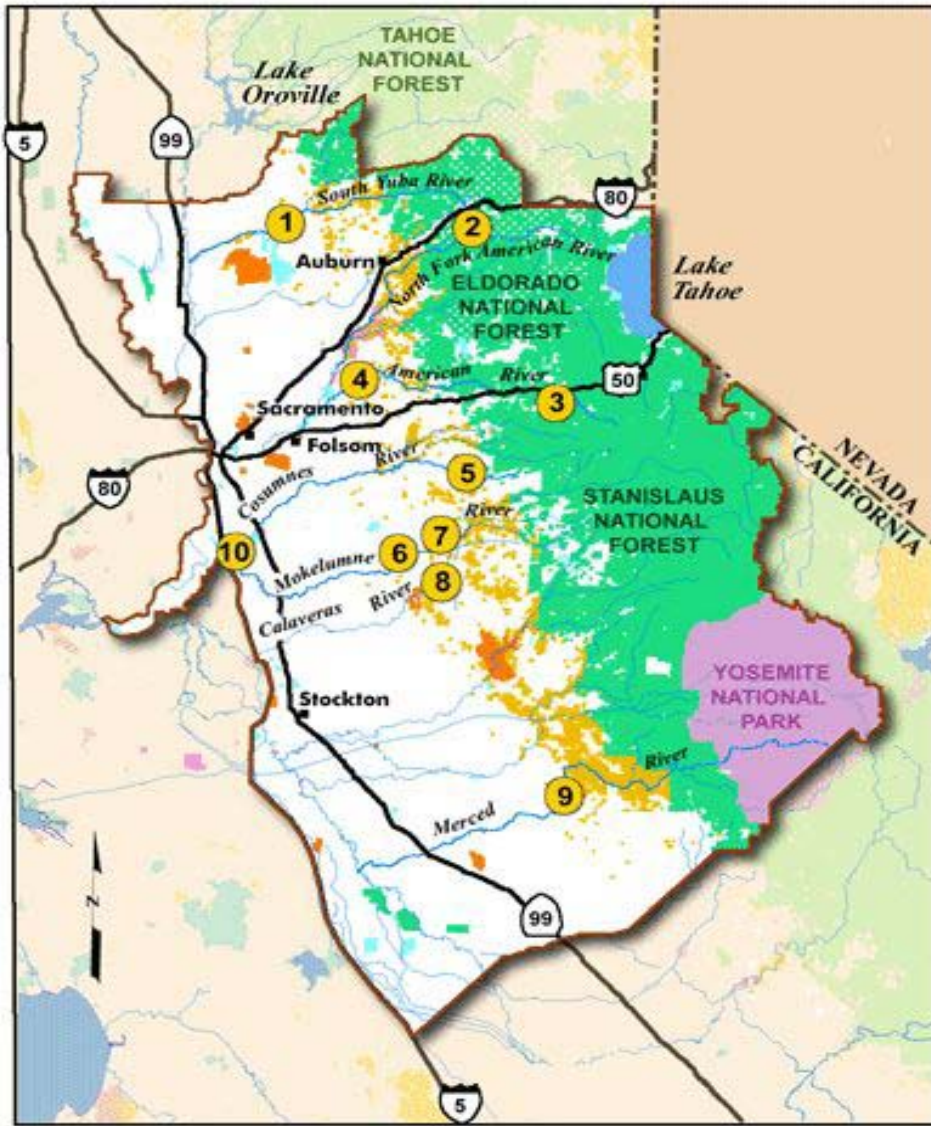




# What is the BLM?







25 0 25 50  
M I L E S

**LANDS ADMINISTERED BY:**

- Bureau of Land Management
- US Forest Service
- National Park Service
- State of California
- Bureau of Reclamation
- Military



# \$\$ Competition?

---

- ◉ Federal Agencies
- ◉ BLM States
- ◉ California Field Offices

# BLM Remediation Costs

## ○ Documents

- PSA
- RSE
- EE/CA
- HERA

## ○ Cleanup

## ○ Monitor & Inspect

DRAFT  
ENGINEERING EVALUATION/COST ANALYSIS  
DAVIS MINE

Bureau of Land Management  
California State Office

Bureau of Land Management  
National Science and Technology Center  
Denver, Colorado



June 7, 2006

# Funding

---

- ◎ National Evaluation Criteria (10 pts each)
  - State Government Priority
  - Partnerships
  - Potentially Responsible Party
  - Water Quality Impairment
  - Notice of Violation
  - Public Health Threat
  - Environmental Threat
  - Ongoing Project
  - Location
  - Cost Efficiency

# BLM Funding

---

## ◎ **BLM: 1620**

- Abandoned Mine Lands Funds
- BLM \$16 million (FY10)
- California BLM \$3 ½ million (FY10)

## ◎ **BLM: 1640**

- Special Cleanup Fund
- Mother Lode FO \$160,000 (FY10)

## ◎ **BLM Stimulus (ARRA)**

- BLM \$29 million
- Mother Lode FO \$2 million



# Other Funding

---

## ◉ Department of the Interior

- Central Hazmat Fund - \$10 million/year
- Natural Resources Damage Assessment and Restoration (NRDAR)

## ◉ State of California

## ◉ Environmental Protection Agency

- Grants
- Assistance
- Superfund

# Funding Reality

---

- Funding Varies --- Year to Year!